

## PRINCIPAL COMPONENT ANALYSIS IN BITTER GOURD (*MOMORDICA CHARANTIA* L.)

VINOD JATAV<sup>1,2</sup>, DK SINGH<sup>2</sup>, NK SINGH<sup>2</sup> AND A PANCHBHAIYA<sup>2</sup>

<sup>1</sup>Faculty of Agricultural Sciences, GLA University, Mathura-281 406, U.P., India

<sup>2</sup>Department of Vegetable Science, G.B. Pant University of Agriculture and Technology, Pantnagar-263145, Uttarakhand, India

**Keywords:** Genetic divergence, PCA, D<sup>2</sup> analysis, Eigen root, Cluster distance

### Abstract

Investigation was carried out to assess genetic diversity through principal component analysis (PCA) and D<sup>2</sup> analysis. Twenty four genotypes of bitter gourd were grown in RBD with three replications including two checks (Pant karela-1 and Pant karela-2). Principal component analysis showed that the first Eigen root had maximum of 26.83% variation of total variation, while the first six principal component axes together with explained 84.05% variation, which were used for cluster analysis, suggesting first six principal axes are adequate to explain the variation in reduced dimension. Clustering through D<sup>2</sup> analysis revealed maximum inter-cluster distance of 498.80 between clusters IV and V followed by cluster III and V (322.81). Thus the genotypes grouped under cluster V, IV and III may yield maximum heterosis upon hybridization and also create wide variability including transgressive segregants in selfed generations.

### Introduction

Bitter gourd (*Momordica charantia* L.) is one of the important cucurbitaceous vegetables grown in India. It is known variously as bitter melon, bitter cucumber, African cucumber, karela, carrila, maiden apple and balsam pear. Its native home is tropical Asia particularly, East India and south China. Among the cucurbits, bitter gourd is considered a prized vegetable because of its high nutritive value, specially having ascorbic acid and iron. The 100 g edible fruit part constitutes 83.2% water, 10.5% carbohydrates, 0.2 - 1.0% fat, 0.5 - 1.0% minerals, 1.7% fiber, 2.1 g protein, 2 mg iron, 23 mg calcium, 96 mg vitamin C, 38 mg phosphorus, 171 mg potassium, 2.40 mg sodium, 0.19 mg copper, 0.08 mg manganese, 0.46 mg zinc and 126 mg  $\beta$  carotene (Gopalan *et al.* 1993). Chang *et al.* (1996) reported that bitter gourd seeds contain 41 - 45% of essential oil and it is ten times greater than the industrially important Tung oil in respect of oleostearic and stearic acid ratio. The fruits and seeds of bitter gourd possess cooling, appetitising, stomachic, antipyretic, carminative, antihelminthic, aphrodisiac and vermifuge properties (Grover and Yadav 2004). Hypoglycemic glycoalkaloids *viz.*, vicine present in seed (Dutta *et al.* 1981, Handa *et al.* 1990) and charantin found in fruit (Lotlikar and Rao 1962). MAP-30, a basic protein that inhibits human immuno-deficiency virus (HIV) is present in both seed and fruit (Lee *et al.* 1995).

Multivariate analysis of elite germplasm collections is a prerequisite for choosing promising genetically diverse lines for desirable traits (Mladenovic *et al.* 2012). Genetic diversity analysis is well exploited for transferring desirable genes from diverse genetic stock available in the gene pool for broadening the genetic base in crops with narrow genetic base. Cluster analysis and PC (principal component) analysis are the important genetic diversity measuring tools employed for exhibiting relative genetic differences among the genotype collection of various crop species. However, despite the potential medicinal and economic values, there are only a few reports of multivariate analysis in Indian bitter gourd genotypes (Dey *et al.* 2007, Shankar *et al.* 2009,

\*Author for correspondence: <vinod.jatav@icar.gov.in>.

Singh *et al.* 2014). In view of this, the present study was conducted to classify a set of bitter gourd genotypes based on multivariate analysis that may be used for generating more heterotic cross combinations and finally superior useful hybrids.

### Materials and Methods

Twenty four germplasm including two checks, i.e. Pant Karela-1 and Pant Karela-2 of bitter gourd (*Momordica charantia* L.) were evaluated for genetic diversity during February - June, 2014 at Vegetable Research Centre (VRC), G.B. Pant University of Agriculture and Technology, Pantnagar, U.S. Nagar, Uttarakhand, India.

The experiment was conducted in RCBD with three replications to assess the performance of 24 bitter gourd genotypes. The crop was planted in 9 m long row, spaced 2.0 m apart, whereas 60 cm plant to plant spacing was maintained. All the recommended agronomic package and practices and protective measures were followed to raise a good crop. The data recorded on 19 quantitative characters, namely days to first male flower, days to first female flower, number of node to first male flower, number of node to first female flower, days to first harvest, number of fruits per plant, average fruit weight, fruit length, fruit diameter, number of seed cavity per fruit, length of seed cavity, main vine length, number of primary branches per vine, length of internodes, number of seeds per fruit, weight of seed per fruit, seed index, fruit yield per plant and fruit yield per hectare. Data of five plants from each genotype was averaged replication wise and mean data was used for statistical analysis. Cluster and PC analysis of 24 bitter gourd genotypes based on yield and its 19 component traits to assess the magnitude of genetic variation was performed by using statistical software Windostat Version 9.2 from indostat services. Clustering pattern among 24 bitter gourd genotypes exhibiting dendrogram was assessed by using Tocher's method (Fig. 1). Average intra- (diagonal) and intercluster distance was estimated by using Tocher's method representing Euclidean distances considering yield and its ten contributing traits in bitter gourd genotypes (Table 1).

**Table 1. Inter and intracluster distances.**

Clusters	I	II	III	IV	V
I	(40.470)	81.147	87.893	114.919	228.385
II	81.147	(61.947)	157.031	219.074	187.665
III	87.893	157.031	(75.125)	170.542	322.814
IV	114.919	219.074	170.542	(0.000)	498.807
V	228.385	187.665	322.814	498.807	(0.000)

The intracluster distances are shown in parenthesis.

### Results and Discussion

Cluster analysis by Tocher method was done to study divergence in 24 genotypes in respect of various economic traits. The genotypes were grouped into 5 clusters. Cluster number I had highest number (12) of genotypes (*viz.*, PBIG-13, PDM, PBIG-8, PBIG-5, PBIG-56, PBIG-16, PBIG-12, PBIG-1, PBIG-15, NDBT-5, PBIG-3 and PBIG-22) followed by cluster number II and III (5 each) then cluster IV and V (1 each). Similar result had also been reported by Islam *et al.* 2010. Distribution of genotypes in each cluster is presented in Table 2.

Maximum intercluster distance was calculated between cluster IV and V (498.807) followed by cluster III and V (322.814), cluster I and V (228.385), cluster II and IV (219.074), cluster II and

V (187.665), cluster III and IV (170.542), and cluster II and III (157.031), however, minimum distance was found between inter cluster, cluster I and II (81.147) followed by cluster I and III (87.893) and I and IV (114.919). The maximum intra-cluster distance was noted in cluster III (75.125) followed by cluster II (61.947) and cluster I (40.470), while minimum intra cluster distance was recorded in cluster IV and cluster V (0.000). The averages inter- and intracluster distances have been presented in Table 2. Cluster dendrogram and Mahalanobis distance depicted in Figs 1 and 2, respectively. Result showed that the intercluster distance greater than intra-cluster distance in all cases. This finding is agreement with the results reported by Islam *et al.* (2010) and Khosa and Dhatt (2015).

**Table 2. Distributing pattern of 24 genotypes of bitter gourd into five clusters.**

Cluster number	Number of genotypes	Genotype included
I	12	PBIG-13, PDM, PBIG-8, PBIG-5, PBIG-56, PBIG-16, PBIG-12, PBIG-1, PBIG-15, NDBT-5, PBIG-3 and PBIG-22
II	5	PBIG-2, PBIG-11, US-33, PBIG-4 and PBIG-10
III	5	GP-2011/1183, PCPGR NO.-1516, MC-84, GP-2011-08 and PBIG-14
IV	1	PBIG-9
V	1	PBIG-28

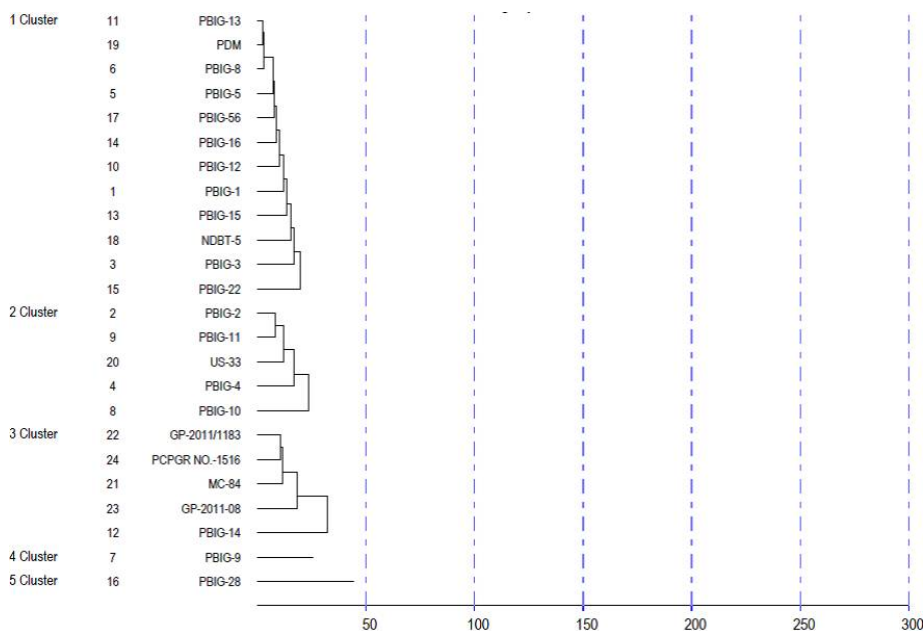


Fig. 1. Clustering pattern of different genotypes by Tocher’s method.

The grouping of genotypes in clusters reflects the relative divergence of clusters and allows a convenient selection group of genotypes with their overall phenotypic similarity for hybridization programme facilitating better exploitation of germplasm. Generally crosses involving parents

belonging to most divergent clusters are expected to give maximum heterosis and create wide variability in genetic architecture. However, for a practical plant breeder, the objective is not only obtaining high heterosis but also to achieve high level of production with the shortest possible time. In the present study, the maximum distances existed between cluster IV and V (498.807). Considering group distances and other agronomic performance, the intergenotypic crosses between the members of cluster V with that of cluster IV would exhibit high heterosis and is also likely to produce new recombinants with desired traits. Therefore, more emphasis should be given on cluster V and IV in selecting inbreds for crossing in bitter gourd hybridization programmes.

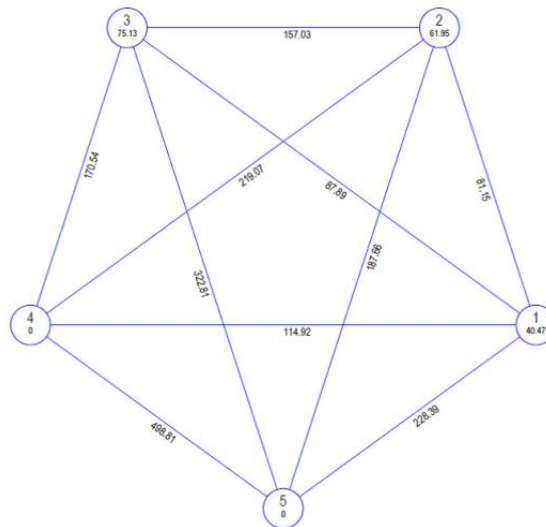


Fig. 2. Mahalanobis euclidean distance through tocher's method.

The selection and choice of parents mainly depend upon contribution of characters towards divergence (Fig. 3). The present study resulted that average fruit weight (65.05%) contributed maximum to the total genetic diversity among the genotypes followed by main vine length (7.25%), number of fruits per plant (6.88%), number of seed cavity per fruit (5.43%), fruit yield per plant (5.43%), number of seeds per fruit (4.71%), fruit length (3.62%), weight of seed per fruit (1.45%), days to first male flower (0.36%), number of branches per vine (0.36%) and fruit yield per hectare (0.36%). Contribution (%) of characters towards divergence is depicted in Fig. 3. Therefore, average fruit weight would be the more important characters for selecting divergent genotypes in breeding programme. Similarly, high contribution towards the divergence was reported by average fruit weight (Singh *et al.* 2013), average fruit weight, fruit length (Singh *et al.* 2014), days to first male flower, number of branches per vine, fruit yield per plant, weight of seed per fruit (Kundu *et al.* 2012).

The principal component analysis of 24 bitter gourd genotypes based on correlation matrix of yield and yield contributing traits yielded the 6 Eigen roots or Eigen values. Eigen roots along with percentage of variation explained by each Eigen roots are presented in Table 3. Principal component analysis revealed highest Eigen value (5.09) of first principal axis. The Eigen root of first principal component was accounted approximately 26.830% of the total variation (Table 3) followed by second to sixth components which accounted 22.962, 14.712, 8.821, 5.662 and 5.068% of total variation presented among genotypes, respectively. The first six PC axes explained 84.055% of the variations, suggesting first six principal axes are adequate to explain the

variation in reduced dimension. These were interpreted as relative weight of the variables in each component. The important variables are those which have high positive or negative relative weight values.

The first principal component had high positive weight to fruit length (0.356) followed by number of node to first male flower (0.329) and days to first female flower (0.329), while high negative weight to number of seed cavity per fruit (-0.367) followed by fruit diameter (-0.311) and number of fruits per plant (-0.281). The second principal component had high positive weight to days to first harvest and fruit yield per ha, while high negative weight to number of seeds per fruit and weight of seed per fruit. The third principal component exhibited high positive weight to fruit yield per ha and internodal length, while negatively associated with number of node to first female and days to first female flower. The fourth principal component had high positive weight to seed index and weight of seed per fruit, while showing negative association with number of node to first female flower and average fruit weight. The fifth principal component contained high positive weight to fruit yield per plant and length of seed cavity. However, it exhibited high negative weight to number of branches per and seed index. The sixth principal component exhibited high positive weight to fruit diameter and internodal length, while exhibited negative weight to fruit length and main vine length. The results presented here are in conformity with the findings of Sanwal *et al.* (2008), Singh *et al.* (2008), Singhal *et al.* (2010), Choudhary *et al.* (2011) and Rabbani *et al.* (2012), Singh *et al.* (2014).

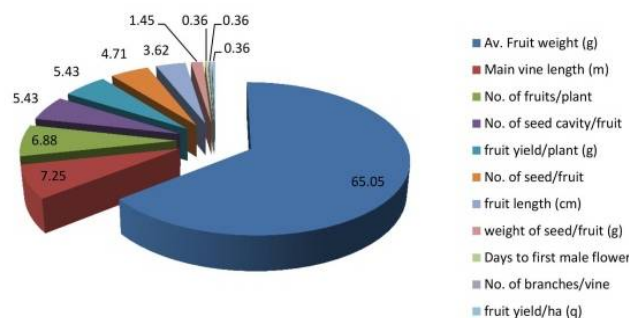


Fig. 3. Contribution (%) of characters towards divergence.

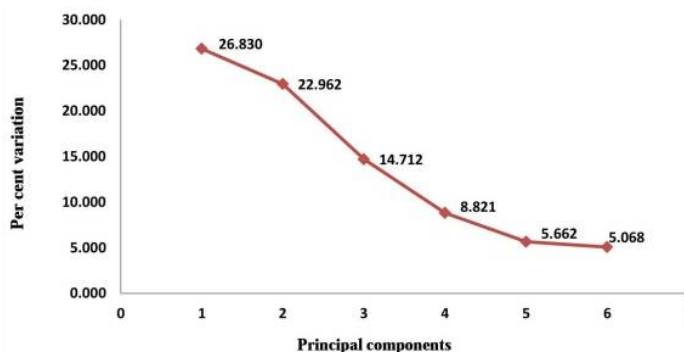


Fig. 4. Latent roots (Eigen values) for PC of different characters.

**Table 3. Values of latent roots (Eigen values) for PC of different characters.**

Parameters	PC 1	PC 2	PC 3	PC 4	PC 5	PC 6
Eigene value (Root)	5.098	4.363	2.795	1.676	1.076	0.963
Explained variation (%)	26.830	22.962	14.712	8.821	5.662	5.068
Cumulative explained variation (%)	26.830	49.792	64.504	73.325	78.987	84.055
Trait	Eigen vectors					
Days to first male flower	0.263	0.152	0.310	0.060	0.274	0.005
Days to first female flower	0.329	0.017	-0.275	0.130	-0.182	0.110
Number of node to first male flower	0.329	0.178	-0.094	0.089	0.113	0.355
Number of node to first female flower	0.103	-0.045	-0.380	-0.432	-0.043	0.250
Days to first harvest	0.148	0.336	0.090	0.003	0.281	0.168
Number of fruits per plant	-0.281	0.178	0.203	-0.227	-0.229	0.216
Average fruit weight (g)	-0.005	-0.352	0.126	-0.359	0.049	0.257
Fruit length (cm)	0.356	-0.108	0.043	-0.068	0.128	-0.355
Fruit diameter (cm)	-0.311	-0.103	-0.178	0.012	0.147	0.446
Number of seed cavity per fruit	-0.367	-0.008	-0.174	0.069	0.068	-0.088
Length of seed cavity (cm)	-0.247	0.175	-0.224	0.268	0.320	-0.084
Main vine length (m)	-0.182	-0.276	0.322	-0.118	0.103	-0.273
number of branches per vine	0.211	0.146	-0.169	-0.299	-0.477	-0.204
Internodal length (cm)	0.085	-0.104	0.390	-0.063	-0.018	0.387
Number of seeds per fruit	0.032	-0.437	-0.053	-0.105	0.053	-0.104
Weight of seed per fruit (g)	-0.013	-0.389	-0.031	0.341	-0.245	0.123
Seed index (g)	0.141	-0.173	0.149	0.529	-0.334	0.157
Fruit yield per plant (g)	0.266	-0.266	0.037	-0.057	0.367	0.050
Fruit yield per ha (q)	-0.082	0.264	0.429	-0.069	-0.224	0.003

It may be concluded from the principal component analysis that important variables in bitter gourd genotype with respect to agronomic and yield contributing traits were number of primary branches, main vine length, days to first female flower anthesis, number of node number to first female flower, days to first fruit harvesting, fruit length, fruit diameter, length of seed cavity, number of fruits per plant, average fruit weight and fruit yield per plant. The above variables might be taken into consideration for effective selection of parents during hybridization programme.

## References

- Chang MK, Conkerton EJ, Chapital DC, Wan P, Vadhwa OP and Spiers JM 1996. Chinese melon (*Momordica charantia* L.) seed: Composition and potential use. *J. Amer. Oil Chemist's Soc.* **73**: 263-65.
- Choudhary BR, Sudhakar P, Singh PK, and Ramesh S 2011. Genetic divergence in hermaphrodite ridge gourd (*Luffa acutangula*). *Veg. Sci.* **38**(1): 68-72.
- Dey SS, Behera TK, Munshi AD, and Sirohi PS 2007. Studies on genetic divergence in bitter gourd (*Momordica charantia* L.). *Indian J. Hort.* **64**(1): 53-57.

- Dutta EK., Chakravarty AK, Chowdhury US, and Pakrash SC 1981. Vicine, a favism-inducing toxin from *Momordica charantia* L. seeds. Indian J. Chem. **208**: 669-671.
- Gopalan C, Rama BV and Balasubramanian SC 1993. Nutritive values of Indian foods. National Institute of Nutrition Publication, Hyderabad.
- Grover JK, and Yadav SP 2004. Pharmacological actions and potential uses of *Momordica charantia*: A review. J. Ethnopharmacol **93**: 123-132.
- Hands C, Singh J, Sharma ML, Kaul A, Neerjaand M and Zafar R 1990. Hypoglycemic principle of *Momordica charantia* Seeds. Nat. Prod. **6**: 16-19.
- Islam MR, Hossain MS, Bhuiyan MSR, Hasan GN, and Syed A 2010. Multivariate analysis of bitter gourd (*Momordica charantia* L.). Middle East J. Sci. Res. **5**(2): 86-90.
- Khosa JS and Dhatt AS 2015. Genetic diversity for morphological and biochemical traits in bulb onion. Indian J. Hort. **72**.1: 143-16.
- Kundu BC, Hossain MM, Mian MA, and Mian IH 2012. Genetic divergence in bitter gourd (*Momordica charantia* L.). J. Asiat. Soc. Bangladesh Sci. **38**.2: 125-134.
- Lee HS, Huang PL, Bourinbalar AS, Chen HC and Kung HF 1995. Inhibition of the integrase of human immuno-deficiency virus (HIV) type I by anti-HIV plant proteins MAP30 and CAP31. Proc. Ned. Acad. Sci. **92**: 8818-8822.
- Lotlikar MM and Rao MRRR 1962. Note on a hypoglycemic principle isolated from the fruits of *Momordica charantia* L. J. Univ. Bombay **29**: 223-224.
- Mladenovic E, Berenji J, Ognjanov V, Ljubojevic M and Cukanovic J 2012. Genetic variability of bottle gourd (*Lagenaria siceraria* (Mol.) Standl) and its morphological characterization by multivariate analysis. Arch. Biol. Sci. **64**(2): 573-583.
- Rabbani MG, Naher MJ, and Hoque S 2012. Variability, character association and diversity analysis of ridge gourd (*Luffa acutangula* Roxb.) genotypes. J. Agri. **10**(2): 1-10.
- Sanwal SK, Yadav RK, Singh PK and Rai N 2008. Variability and genetic diversity studies in indigenous chow-chow genotypes of northeast India. Indian J. Hort. **65**(2): 167-170.
- Shankar R, Bagle BG and More TA 2009 Diversity analysis of bitter gourd (*Momordica charantia* L.) germplasm from tribal belts of India. Asian Australasian J. Plant Sci. Biotech. **3**: 21-25.
- Singh B, Singh AK and Kumar S 2013. Genetic divergence studies in bitter gourd (*Momordica charantia* L.). Acad. J. Plant Sci. **6**(2): 89-91.
- Singh DK, Maurya SK, Jaiswal HR and Singh A 2008. Studies on genetic variability and genetic divergence analysis in ridge gourd (*Luffa acutangula* (Roxb.) L.). Pro. Hort. **40**(2): 149-154.
- Singh HK, Singh VB, Randhir K, Baranwal DK and Ray PK 2014. Assessment of genetic diversity based on cluster and principal component analyses for yield and its contributing characters in bitter gourd. Indian J. Hort. **71**(1): 55-60.
- Singhal P, Singh DK, Damke SR, and Choudhary H 2010. Genetic diversity in indigenous germplasm of ash gourd. Indian J. Hort. **67**: 208-213.

(Manuscript received on 17 March, 2018; revised on 2 July, 2019)